



# PROPERTY index tracker

## Fund Objective

The investment objective of the PropTrax<sup>Ten</sup> Fund is to replicate the price and yield performance of the Property Index Tracker Top Ten Equally Weighted Listed Property Index ("PropTrax Top Ten Index"), a custom index calculated independently by the FTSE/JSE.

This index consists of the top ten companies, as measured by investable market capitalisation, in the FTSE/JSE SAPY Index, but they are held in equal weightings of 10.0% each (as at the quarterly rebalancing date).

## Why choose this fund?

Property Index Tracker Collective Investment Scheme in Securities, PropTrax<sup>Ten</sup>, is an Exchange Traded Fund (ETF) which tracks the performance of the Property Index Tracker Top Ten Equally Weighted Listed Property Index. The benefits of PropTrax<sup>Ten</sup> are the following :

- Cost-effective
- Accessible
- Diversified
- Own the top SA listed commercial real estate stocks
- Tight buy and sell spreads
- Transparent
- Flexible
- No prescribed fixed investment period
- Offers quarterly distribution
- Useful asset allocation tool for professional investors

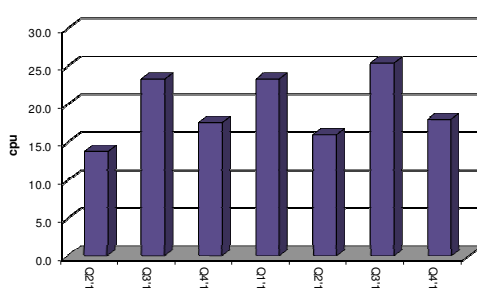
## Fund Performance

	1 Year	2 Years	3 Years	Since inception
PropTrax <sup>Ten</sup> *	31.32%	N/A	N/A	25.48%
Ten Index**	31.52%	20.78%	23.22%	25.73%
SAPY Index*	35.88%	21.66%	24.26%	26.85%

Source performance table (annualised, gross of fees): \*SIM, \*\*FTSE/JSE

## Distributions

Distributions - Since inception paid in cents per unit



Constituents	Weight (%)	Constituents	Weight (%)
Vukile	10.30	SA Corp	10.03
Hyprop	10.20	Emira	9.99
Fountainhead	10.12	Resilient	9.92
Acucap	10.08	Redefine	9.70
Capital	10.04	Growthpoint	9.62

## FACT SHEET

As at 31 December 2012

PropTrax<sup>Ten</sup>

EXCHANGE TRADED FUND

## Fund Information

Classification	Domestic - Real Estate - General
Benchmark	PropTrax Top Ten Index
Launch date	30 May 2011
No of holdings	10
Redemption fee for full baskets	2% (Not applicable to secondary market trading)
Annual fee	0.51%
Share code	PTXTEN
Original price	R10.95
Current price	R14.52
Distribution declaration dates	Quarterly
Last two distributions	Sep 2012 25.39 cpu Dec 2012 18.00 cpu
Historical yield	6.44%
Fund size	R93 847 218
Shares in issue	6 463 307
Trustee	ABSA Bank Limited
Market maker	Independent Securities (Pty) Ltd
Asset manager	Sanlam Investment Management (Pty) Ltd

## Manager Information

Property Index Tracker Managers (Pty) Ltd

Physical address: 4th Floor, Rivonia Village,  
Rivonia Boulevard, Rivonia, 2191  
Postal address: P O Box 2555, Rivonia, 2128  
Tel: (011) 612 6888  
Fax: (011) 612 6869  
Website: [www.proptrax.co.za](http://www.proptrax.co.za)

## Disclaimer

Collective Investment Schemes in Securities (CIS) are generally medium to long term investments. The value of the participatory interests may go down as well as up and past performance is not necessarily a guide to future performance. CIS are traded at ruling prices and can engage in borrowing and scrip lending. A schedule of fees and charges and maximum commission is available on request from the company/scheme. Commissions and incentives may be paid and if so, would be included in the overall costs. Exchange Traded Funds (ETFs) are Collective Investment Schemes in Securities that trade on stock exchanges. Trading in ETFs will incur the normal costs associated with listed securities including brokerage settlement costs, Uncertified Securities Tax (UST), other statutory costs and administrative costs. The price at which ETFs trade on an exchange may differ from the Net Asset Value price published at the close of the trading day, because of intraday price movements in the value of the constituent basket of securities. Property Index Tracker Managers (Pty) Ltd is a Member of the Association for Savings & Investment SA.