

INVESTMENT MANDATE

The mandate of the Satrrix Fini portfolio is to track as closely as possible the value of the FTSE/JSE Financial 15 index. Satrrix Fini is an index tracking fund, registered as a Collective Investment Scheme and is also listed on the JSE Securities Exchange as an Exchange Traded Fund. The Satrrix Fini provides investors with the price performance of the FTSE/JSE Financial 15 index and also pays investors all dividends received from companies in the index, net of costs, on a quarterly basis. The Satrrix Fini Portfolio engages in scrip lending with the sole purpose of reducing the costs of running the portfolio thereby enhancing tracking performance. Manufactured (taxable) dividends could arise from such transactions.

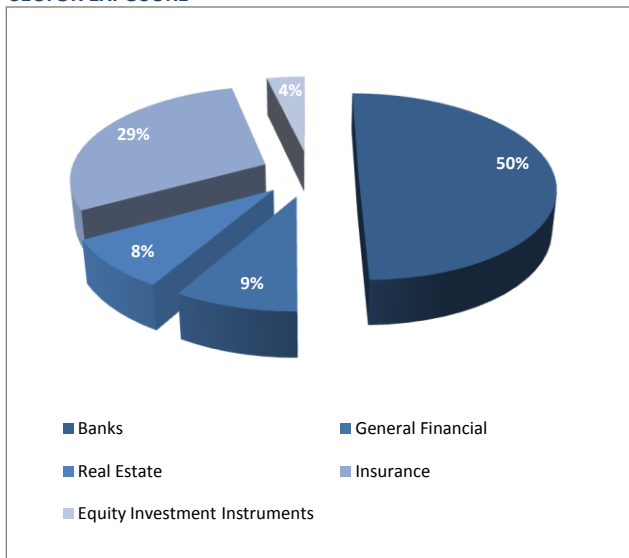
PRODUCT

Category	Exchange Traded Fund
Instrument Code	STXFIN
Number of investors	7,409
Total expense ratio (TER)**	0.456%
Distributions (Quarterly)	Mar, Jun, Sep, Dec
Benchmark	FTSE/JSE FINANCIAL 15

MARKET DATA

Price	R 9.96
Dividend yield	3.41%
Securities in issue	63,736,990
Volume traded (for the quarter)	2,913,619
Value traded (for the quarter)	29,085,447
Size (Market Cap)	R 635m

SECTOR EXPOSURE



SATRIX INVESTMENT PLAN*

You can invest in Satrrix FINI through the Satrrix Investment Plan or a stockbroker. If you invest through the Satrrix Investment Plan you can invest with a single amount of just R1 000 - or you can invest as little as R300 per month through a debit order. The Satrrix Investment Plan administration is outsourced to AOS.

FEES (excluding VAT)

Buying

Stock brokerage fee (Initial)	0.10%
Debit order fee (per debit order)	R 3.50
Annual administration fee	0.35% - 0.75%

Selling

Stock brokerage	0.10%
-----------------	-------

Call centre

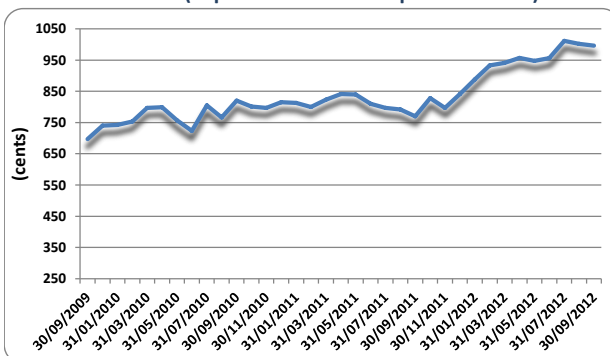
0860 110 0670

e-mail

satrix@aospartner.com

For more information on the Satrrix Investment Plan visit the Satrrix website **www.satrix.co.za**

SATRIX FINI PRICE (September 2009 to September 2012)



PERFORMANCE PER ANNUM (Sep to Sep)

	Satrix FINI	FTSE/JSE FINANCIAL 15 (total return)
1 year return	33.87%	35.87%
2 year return	13.35%	14.48%
3 year return	16.35%	17.32%
4 year return	13.62%	14.35%
5 year return	6.64%	7.28%
Returns are calculated for lump sum investments. All dividends reinvested.		
Inception	February 2002	

* Satrrix FINI securities can be bought and sold directly through stockbrokers by both retail and institutional investors. (In which case, no Satrrix Investment Plan annual administrative costs are incurred and initial fees and other costs will be negotiable with the stockbroker.)

** The TER is calculated as an annualised percentage of the average NAV of the portfolio incurred as charges (allowable charges per prescribed industry standards) in the management of the portfolio. The TER is calculated from 1 August 2011 to 30 September 2012. The current TER cannot be regarded as an indication of future TERs. A higher TER does not imply a poor return nor does a low TER imply a good return. This information is factually correct as at 30 September 2012.



SATRIX FINI ETF

30 SEPTEMBER 2012

SATRIX FINI DISTRIBUTED AMOUNT (CENTS PER SECURITY)

<i>Period</i>	<i>Distributed amount</i>	<i>Period</i>	<i>Distributed amount</i>
September 2012	8.43 cps	September 2011	6.04 cps
June 2012	15.28 cps	June 2011	14.31 cps
March 2012	3.76 cps	March 2011	1.98 cps
December 2011	6.89 cps	December 2010	5.43 cps

BASKET CONSTITUENTS*

At 30 September 2012

<i>Code</i>	<i>Share</i>	<i>No of Shares</i>	<i>% Weighting</i>
ABL	African Bank Inv Ltd	9,613	3.12%
ASA	ABSA Group Ltd	4,293	5.95%
CSO	Capital Shop Cent Grp plc	7,711	3.39%
DSY	Discovery Holdings Ltd	3,513	1.92%
FSR	Firststrand Ltd	50,328	13.88%
GRT	Growthpoint Prop Ltd	20,837	5.19%
INL	Investec Ltd	3,343	1.69%
INP	Investec plc	7,236	3.71%
LBH	Liberty Holdings Ltd	1,709	1.69%
MMI	MMI Holdings Limited	14,077	2.98%
NED	Nedbank Group Ltd	3,019	5.55%
OML	Old Mutual plc	58,176	13.29%
REI	Reinet Inv Soc Anon	23,423	3.63%
RMH	RMB Holdings Ltd	12,657	4.63%
SBK	Standard Bank Group Ltd	18,920	20.00%
SLM	Sanlam Limited	25,103	9.38%

* One basket represents 1 million Satrix FINI securities

www.satrix.co.za

DISCLAIMER: Satrix Managers (Proprietary) Limited ("Satrix") approves this document. It should neither be considered as an offer to sell nor a solicitation of an offer to buy any securities. Satrix securities are listed on the JSE Limited and the trading of participatory interests on the Exchange will incur trading and settlement costs. The price at which a participatory interests trades on an exchange, may differ from the price at which the manager repurchases participatory interests. Any pricing included in this document is indicative and is not binding as such on Satrix. As with all stock exchange investments, the market price of Satrix securities will fluctuate according to market conditions, general sentiment and other factors. The value of the product may fluctuate daily as a result of these factors. Collective Investment Schemes in Securities (CIS) are generally medium to long term investments. The value of participatory interests may go down as well as up and past performance is not necessarily a guide to the future. CIS products are traded at ruling prices and can engage in borrowing and scrip lending. Although best efforts have been used to ensure that the information in this document is reliable, it is not guaranteed for accuracy, completeness and adequacy. The information contained herein is merely a description of certain facts and cannot be considered as financial advice. Therefore should the user of this document seek financial, tax, legal, and accounting advice the user should obtain his/her own independent advice. Satrix and its officers, directors, agents and employees, do not accept any liability whatsoever, however arising, for any direct or consequential loss arising from any use of this document or its contents.