

INVESTMENT MANDATE

The mandate of the Satrix SWIX Top 40 portfolio "Satrix SWIX" is to track as closely as possible the value of the FTSE/JSE SWIX Top 40 index. Satrix Swix is an index tracking fund, registered as a Collective Investment Scheme and is also listed on the JSE Securities Exchange as an Exchange Traded Fund. The Satrix SWIX provides investors with the price performance of the FTSE/JSE Swix Top 40 index and pays all the dividends received from companies in the index to investors, on a quarterly basis, net of costs. The Satrix SWIX engages in scrip lending with the sole objective of reducing its costs thereby enhancing the tracking performance of the portfolio. Manufactured (taxable) dividends could arise from such transactions.

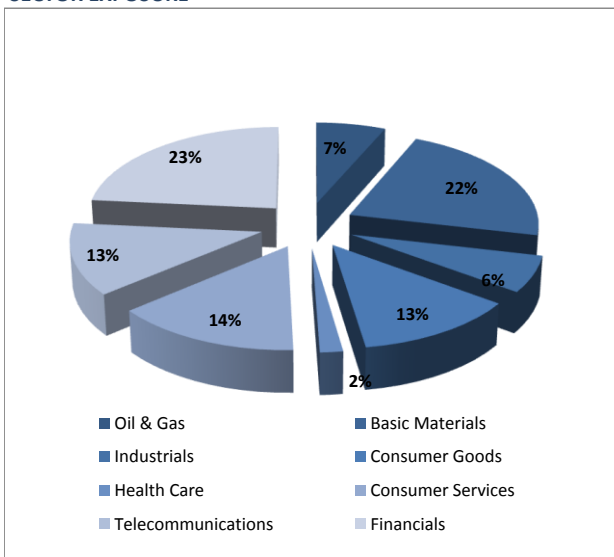
PRODUCT

Category	Exchange Traded Fund
Instrument Code	STXSWI
Number of investors	3,258
Total expense ratio (TER)**	0.456%
Distributions (Quarterly)	Mar, Jun, Sep, Dec
Benchmark	FTSE/JSE SWIX TOP 40

MARKET DATA

Price	R 6.82
Dividend yield	2.74%
Securities in issue	35,718,130
Volume traded (for the quarter)	52,838,492
Value traded (for the quarter)	350,590,974
Size (Market Cap)	R 244m

SECTOR EXPOSURE



SATRIX INVESTMENT PLAN*

You can invest in Satrix SWIX through the Satrix Investment Plan or a stockbroker. If you invest through the Satrix Investment Plan you can invest with a single amount of just R1 000 - or you can invest as little as R300 per month through a debit order. The Satrix Investment Plan administration is outsourced to AOS.

FEES (excluding VAT)

Buying

Stock brokerage fee (Initial)	0.10%
Debit order fee (per debit order)	R 3.50
Annual administration fee	0.35% - 0.75%

Selling

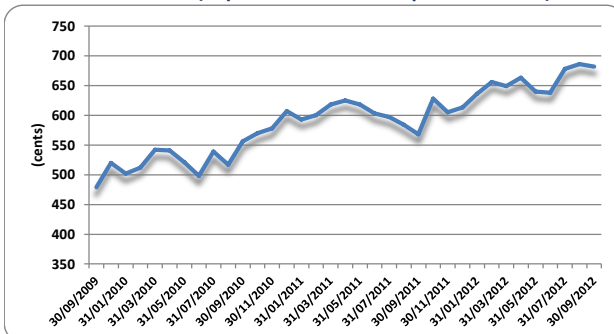
Stock brokerage	0.10%
-----------------	-------

Call centre **0860 110 0670**

e-mail satrix@aospartner.com

For more information on the Satrix Investment Plan visit the Satrix website www.satrix.co.za

SATRIX SWIX PRICE (September 2009 to September 2012)



PERFORMANCE PER ANNUM (Sep to Sep)

	Satrix SWIX	FTSE/JSE SWIX TOP 40 (total return)
1 year return	23.70%	25.68%
2 year return	13.21%	14.38%
3 year return	15.34%	16.34%
4 year return	12.64%	13.61%
5 year return	6.75%	7.48%
Returns are calculated for lump sum investments. All dividends reinvested.		
Inception	April 2006	

* Satrix SWIX securities can be bought and sold directly through stockbrokers by both retail and institutional investors. (In which case, no Satrix Investment Plan annual administrative costs are incurred and initial fees and other costs will be negotiable with the stockbroker.

** The TER is calculated as an annualised percentage of the average NAV of the portfolio incurred as charges (allowable charges per prescribed industry standards) in the management of the portfolio. The TER is calculated from 1 August 2011 to 30 September 2012. The current TER cannot be regarded as an indication of future TERs. A higher TER does not imply a poor return nor does a low TER imply a good return. This information is factually correct as at 30 September 2012.

SATRIX SWIX DISTRIBUTED AMOUNT (CENTS PER SECURITY)

<i>Period</i>	<i>Distributed amount</i>	<i>Period</i>	<i>Distributed amount</i>
September 2012	7.03 cps	September 2011	5.91 cps
June 2012	7.07 cps	June 2011	4.79 cps
March 2012	2.85 cps	March 2011	2.10 cps
December 2011	3.19 cps	December 2010	2.24 cps

BASKET CONSTITUENTS*

At 30 September 2012

Code	Share	No of Shares	% Weighting
AGL	Anglo American plc	1,408	5.08%
AMS	Anglo American Plat Ltd	203	1.23%
ANG	Anglogold Ashanti Ltd	382	1.59%
APN	Aspen Pharmacare Holdings L	854	1.78%
ARI	African Rainbow Minerals Ltd	213	0.51%
ASA	ABSA Group Ltd	899	1.81%
ASR	Assore Ltd	105	0.50%
BIL	BHP Billiton plc	1,605	6.02%
BTI	British American Tobacco plc	558	3.47%
BVT	Bidvest Ltd	820	2.45%
CFR	Compagnie Fin Richemont	3,921	2.87%
CSO	Capital Shop Cent Grp plc	861	0.55%
EXX	Exxaro Resources Ltd	355	0.83%
FSR	Firstrand Ltd	10,543	4.23%
GFI	Gold Fields Ltd	548	0.84%
GRT	Growthpoint Prop Ltd	4,365	1.58%
HAR	Harmony GM Co Ltd	430	0.43%
IMP	Impala Platinum Holdings Ltd	1,185	2.33%
INL	Investec Ltd	525	0.39%
INP	Investec plc	1,137	0.85%
IPL	Imperial Holdings Ltd	527	1.46%
KIO	Kumba Iron Ore Ltd	241	1.76%
MND	Mondi Ltd	296	0.36%
MNP	Mondi plc	460	0.55%
MPC	Mr Price Group Ltd	624	1.13%
MSM	Massmart Holdings Ltd	270	0.65%
MTN	MTN Group Ltd	4,715	10.85%
NED	Nedbank Group Ltd	632	1.69%
NPN	Naspers Ltd	771	5.76%
OML	Old Mutual plc	6,093	2.03%
REM	Remgro Ltd	1,205	2.54%
RMH	RMB Holdings Ltd	2,651	1.41%
SAB	SABMiller plc	625	3.31%
SBK	Standard Bank Group Ltd	3,963	6.10%
SHF	Steinhoff Int Holdings Ltd	4,431	1.65%
SHP	Shoprite Holdings Ltd	1,429	3.56%
SLM	Sanlam Limited	5,259	2.86%
SOL	Sasol Limited	1,209	6.44%
TBS	Tiger Brands Ltd	357	1.44%
TRU	Truworths Int Ltd	1,151	1.60%
VOD	Vodacom Group Ltd	1,118	1.68%
WHL	Woolworths Holdings Ltd	2,092	1.83%

* Once basket represents 1 million Satrix Swix securities

www.satrix.co.za

DISCLAIMER: Satrix Managers (Proprietary) Limited ("Satrix") approves this document. It should neither be considered as an offer to sell nor a solicitation of an offer to buy any securities. Satrix securities are listed on the JSE Limited and the trading of participatory interests on the Exchange will incur trading and settlement costs. The price at which a participatory interests trades on an exchange, may differ from the price at which the manager repurchases participatory interests. Any pricing included in this document is indicative and is not binding as such on Satrix. As with all stock exchange investments, the market price of Satrix securities will fluctuate according to market conditions, general sentiment and other factors. The value of the product may fluctuate daily as a result of these factors. Collective Investment Schemes in Securities (CIS) are generally medium to long term investments. The value of participatory interests may go down as well as up and past performance is not necessarily a guide to the future. CIS products are traded at ruling prices and can engage in borrowing and scrip lending. Although best efforts have been used to ensure that the information in this document is reliable, it is not guaranteed for accuracy, completeness and adequacy. The information contained herein is merely a description of certain facts and cannot be considered as financial advice. Therefore should the user of this document seek financial, tax, legal, and accounting advice the user should obtain his/her own independent advice. Satrix and its officers, directors, agents and employees, do not accept any liability whatsoever, however arising, for any direct or consequential loss arising from any use of this document or its contents.